

V&A Highlights 2012

SPRING 2012

MAJOR EXHIBITION

British Design 1948-2012: Innovation in the Modern Age

Sponsored by Ernst & Young

31 March – 12 August 2012

Jaguar E-Type, 1961 © Jaguar Heritage



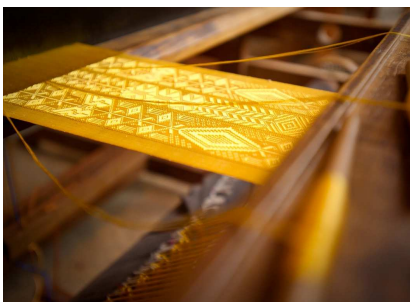
The V&A's major spring exhibition will showcase the best of British design and creative talent from the 1948 'Austerity Olympics' to the summer of 2012. This will be the first comprehensive exhibition to examine the ways in which designers born, trained or working in the UK have produced

innovative and internationally acclaimed works, placing Britain as a leading creative nation. The exhibition will bring together over 350 objects, from recent discoveries which have never before been on museum display to much-loved designs including an E-type Jaguar car, an Alexander McQueen evening gown, a six metre model of Concorde, fine art by Richard Hamilton and David Hockney and textiles by Laura Ashley.

DISPLAY

Golden Spider Silk

25 January – 5 June 2012



On display at the V&A will be the only large pieces of silk in the world to have been spun by spiders. A delicate four metre long shawl has been woven from the silk of more than a million female Golden Orb spiders collected from the highlands of Madagascar. The hand-woven textile is naturally golden in colour and took over four years to create. It will be shown with

a new cape, currently being woven and embroidered in Madagascar, which will go on public display for the very first time at the V&A. The earliest recorded weave using the silk of spiders dates from 1709, and the last known spider silk textile was created at the end of the 19th century, but no examples remain. These new pieces have been created by Simon Peers and Nicholas Godley who have revived the techniques based on 19th-century accounts and illustrations.

EXHIBITION

Queen Elizabeth II by Cecil Beaton: A Diamond Jubilee Celebration

8 February – 22 April 2012



Cecil Beaton, *Queen Elizabeth II in Coronation Robes*, 1953

To celebrate The Queen's Diamond Jubilee, the V&A is holding an exhibition of portraits of Her Majesty The Queen by photographer Cecil Beaton (1904-1980). It will explore Beaton's long relationship with Queen Elizabeth II, who was a teenage princess when she first sat for him in 1942. On display will be around 100 photographs of The Queen taken over three decades in her roles as princess, monarch and mother, including wartime photographs of Princess Elizabeth with her family, the official portraits of her Coronation Day, as well as tender images of The Queen with her young children. Archive film and radio footage will set the photographs within their original context and excerpts from Beaton's diaries and letters will reveal an insight into the working practice of a royal sitting.

With thanks to Garrard

SUMMER 2012

EXHIBITION

Ballgowns: British Glamour Since 1950

Sponsored by Coutts

19 May 2012 – 6 January 2013



Erdem, *A/VV 2008*, photograph © David Hughes

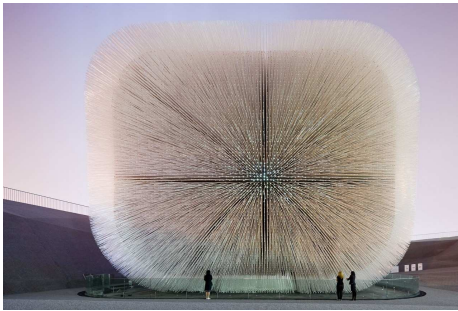
The first display to be held in the redesigned fashion gallery will present over 60 ballgowns created by British fashion designers over the last 60 years. The exhibition will reflect how the ballgown has long been the garment of choice for formal events from private parties to the red carpet. There will be a selection of royal ballgowns, including a Norman Hartnell gown designed for Elizabeth the Queen Mother and Princess Diana's 'Elvis Dress' designed by Catherine Walker. Dresses worn by celebrities including Sandra Bullock, Daphne Guinness, Elizabeth Hurley, Bianca Jagger and Beyoncé Knowles will also be shown. The ground floor of the exhibition will feature designs from the 1950s to the early 2000s and the mezzanine will be a red carpet of gowns by contemporary labels such as Alexander McQueen, Giles, Erdem, Roksanda Illincic, Mark Fast, Jenny Packham and Gareth Pugh.

CONTEMPORARY EXHIBITION

Heatherwick Studio: Designing the Extraordinary

Sponsored by Ernst & Young

31 May – 30 September 2012



UK Pavilion, Shanghai Expo 2010, photograph by Wan Baan

This will be the first major solo exhibition exploring the work of one of the most inventive and experimental design studios practising in Britain today. It will show the enormous variety of projects that Thomas Heatherwick and his studio have worked on over the last two decades spanning the disciplines of architecture, engineering, transport

and urban planning to furniture, sculpture and product design. On display will be over 150 objects, from an original seed-tipped rod from the UK Pavilion *Seed Cathedral* at Shanghai World Expo (2010) to a detail of the new London double-decker bus at full-scale (2012).

AUTUMN 2012

MAJOR EXHIBITION

Hollywood Costume

Sponsored by Harry Winston

20 October 2012 – 27 January 2013



The Wizard of Oz, 1939, © doctormacro.com

Hollywood Costume will gather together some of the greatest costumes designed for the most well known cinema characters over a century of film making. From Judy Garland's blue and white gingham pinafore dress featured in *The Wizard of Oz* (1939) and the little black dress designed by Hubert De Givenchy for Audrey Hepburn in *Breakfast at Tiffany's* (1961) to Johnny Depp's outfit from *Pirates of the Caribbean* (2011), it will be the first exhibition to bring these costumes together, many of which have never before been on public display. *Hollywood*

Costume will explore the art of costume design – from the glamorous to the very subtle – as an essential way of building character and storytelling. Alongside more than 100 costumes will be film clips, projections and specially commissioned interviews with Hollywood directors, costume designers and actors including Meryl Streep and Robert de Niro.

With special thanks to Mr David C Copley. With thanks to the Blavatnik Family Foundation.

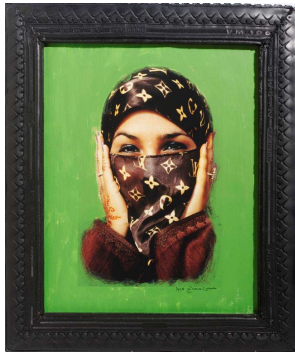
Travel partner: American Airlines. Technology partner: Samsung.

CONTEMPORARY EXHIBITION

Light from the Middle East: Contemporary Photographs

13 November 2012 – 17 March 2013

Hassan Hajjaj, *Saida in Green*, 2000



This exhibition will look at recent photographic practice emerging from the Middle East, offering multiple viewpoints of a region where collisions between personal, social, religious and political life can be emotive, troubling and complex. At a time when international attention is being drawn to the growing cultural sector and burgeoning art market in the region, *Light from the Middle East* will present a wide range of styles and approaches by Middle Eastern artists living in the region and elsewhere.

This exhibition has been enabled through the establishment of the Art Fund Collection of Middle Eastern Photography at the V&A and the British Museum.

NEW GALLERY

Furniture Gallery

Opens November 2012

Panton Chair, 1960 © V&A



The Furniture Gallery will provide, for the first time, a dedicated home for the V&A's internationally renowned furniture collection. The beautifully designed gallery space will display outstanding pieces of British and European furniture, from the Middle Ages to the present, as well as examples of Asian furniture. The gallery will tell the story of 600 years of furniture production, exploring a range of materials and techniques, from cabinet-making to digital fabrication. The displays will tell the story of furniture through the way it was made and the people who made it.

The Furniture Gallery is fully funded with a lead gift from an anonymous donor.

For further PRESS information please contact the Press Office on +44 (0)207 942 2502 or email press.office@vam.ac.uk (not for publication)